



TankConnection

Affiliate Group

Dry Bulk Storage Systems Project Capabilities

- Bolted RTP Storage Tanks
- Field-Weld Silos
- Shop-Weld Tanks
- Hybrid Tank Designs
- Integrated Storage Systems



Tank Connection

Get Connected...with the New Industry Leader in Storage!

If your project involves a single silo or an integrated storage system, no one offers more services and creative solutions than Tank Connection. We are the domestic leader in storage tanks, silos and integrated storage systems. Our specialties include shop and field-welded and bolted storage tanks/silos, auxiliary fill and discharge equipment, truck and rail load/unload applications and mass flow discharge design.

Custom Storage

Shop-welded/hopper bottom tanks up to 10,000 cubic feet

Field-welded/hopper bottom silos up to 200,000 cubic feet

Bolted industrial process tanks up to 80,000 feet

Hybrid Silos up to 150,000 cubic feet

Tank Connection will recommend the best solution for your application. Project service begins with your first contact. The most experienced professionals in the marketplace will answer your storage questions and follow with specification development tailored for your requirements. From the quote stage through installation, Tank Connection provides streamlined processing and *Golden Rule* customer service.

Service

Telephone Consultation

Specification Development

Product Testing

Customized Design

Material Supply

Field Installation Service

Our in-house Engineering Team includes experienced project managers and CAD layout operators that interface dry bulk storage applications everyday. We recognize the importance of maintaining project schedules. Tank Connection has developed procedures to expedite project changes virtually overnight. Storage tank designs and supporting calculations can be stamped with a Professional Engineer's stamp from any state.

Engineering

Professional Engineering Services

API 650, API 620, ASCE, AWWA D100, AWWA D103, AISC, IBC, NFPA, FM, RTP Smoothwall

Tank Calculations & PE Stamps

Detailed Design & CAD Layout

Dedicated Project Managers



Description
PRB coal storage, functional mass flow discharge system (42' diam. x 120' ht.)

Features
TC integrated system

Services
Total turnkey design, supply & field install



Description
Fly ash storage/dual rail loadout system (47' diam. x 130' ht.)

Features
Bolted RTP tank construction, rail loadout, concrete floor for fluidization system, mezzanine floor for pugmills, structural support steel

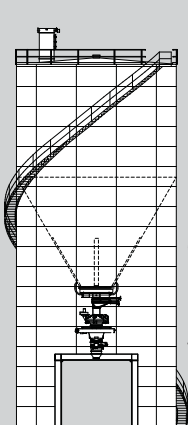
Services
Total turnkey - specification, design, fabricate & install



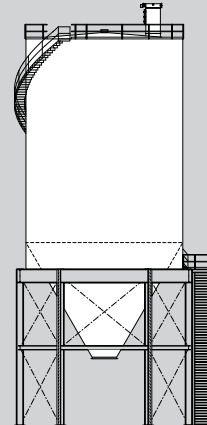
Description
Aggregate Storage (18', 21', 26' diam. bolted RTP silos)

Features
Functional mass flow discharge, lug support design on structural steel

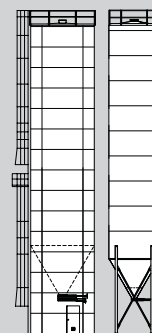
Services
Total turnkey design, fabricate & install



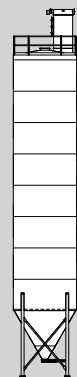
Cement Storage
Fly Ash Storage
Fluidized
Dustless Unloading
Truck & Rail Loadout



Mineral Storage
Field-Welded
6 & 8 Legs



Plastics
Gravity Blender
Skirted Bolted
Shop-Welded
Design Gravity Feed



Weighing on
Load Cells

Tank Connection is your most knowledgeable resource for the storage of minerals, aggregates, plastic resins, chemicals, food products, wood waste and other dry bulk materials. Customers and consultants recognize the Tank Connection team's expertise in providing innovative solutions. We understand the importance of the interface between the storage silo and its auxiliary equipment.

Integration

Functional Mass Flow-FIFO

Pneumatic Fill/Discharge Systems

Mechanical Fill/Discharge Equipment

Dustless Unloading

Weighing/Load Cell Applications

Active/Passive Discharge Systems

Tank Inventory Management



Description
Frac sand receiving/loadout terminal (26' diam. x 80' ht.)

Features
Premier RTP tank construction, complete integrated mechanical storage system

Services
Specification, design, fabrication, installation & start-up

Our in-house services enable us to perform rapid turnarounds on mass flow, funnel flow and expanded flow custom silos with appropriate discharge equipment. We can provide field installation of storage tanks, and systems, including foundations, auxiliary equipment, electrical and controls. Tank Connection also routinely conducts silo inspections, retrofits and repairs of existing tanks.

Field Installation



Description
Dry bulk & liquid storage systems

Features
Fill & discharge system, filters, bin activators, level controls, pneumatic fill & system integration

Services
Total turnkey design, supply & install

In storage silos and integrated storage systems, attention to detail is an essential part of our approach. We're willing to respond to non-standard requests because we have the capabilities to consider special applications and produce workable solutions. Every storage tank/system we provide is backed by a Tank Connection *Reliable Performance Guarantee*.

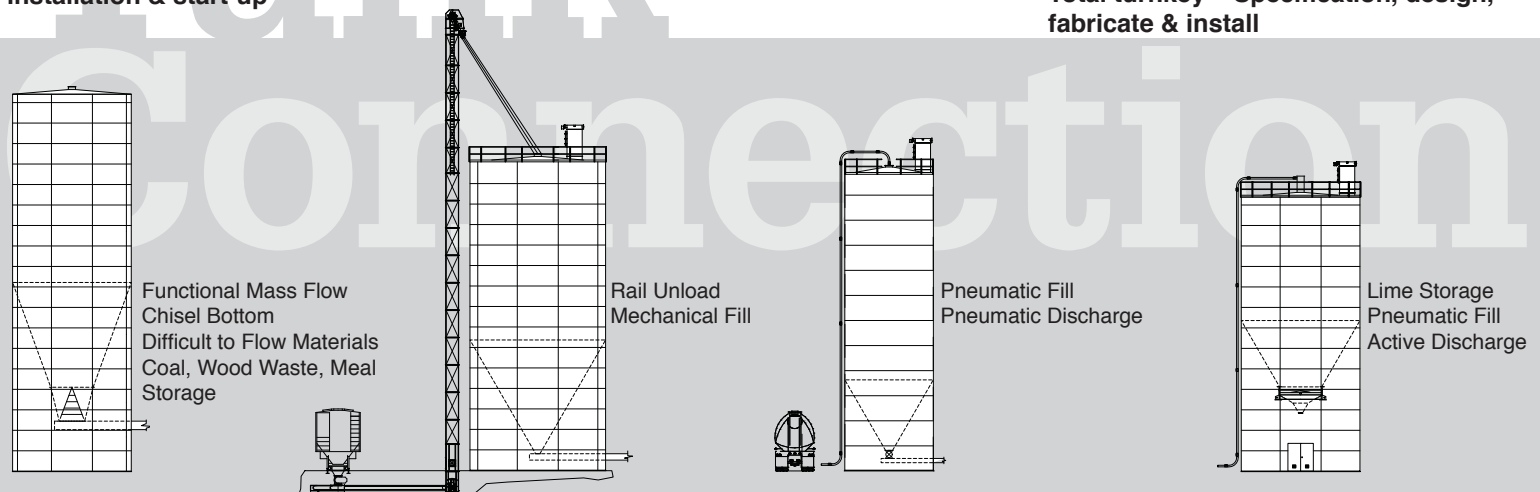
Commitment



Description
Power Utility: Limestone, fly ash & recycle ash storage systems (29', 38', 47' diam. tanks)

Features
Bolted RTP, Field-weld & Hybrid tank construction, mass flow hopper designs, structural steel

Services
Total turnkey – Specification, design, fabricate & install





A lined, steep slope chisel bottom hopper promotes coal flow and reduced the tank height requirements. Come to Tank Connection for recommendations, innovations and custom designs.



Tank Connection offers its full range of services for potable water, wastewater treatment and fire protection water tanks, from basic storage to sophisticated applications.



Need storage? Get field-welded, bolted or shop-welded tank construction and integrated storage systems, installed and guaranteed by Tank Connection.



At Tank Connection, we build excellence in Storage Systems:

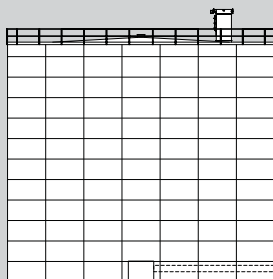
- #1 in Bolted RTP Tank Construction...Worldwide
- #1 in rated Bolted Tank Erection Process
- #1 QA System Certified - unmatched product quality
- #1 in Field Installation Safety
- #1 in Storage Experience - over 750 years combined



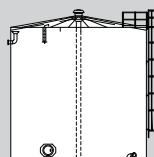
www.tankconnection.com • sales@tankconnection.com e-mail

620.423.3010 Phone • 620.423.3999 Fax

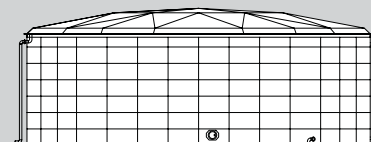
1801 S. 21st Suite A • Parsons, KS 67357



XL Storage
Flat Bottom
Bolted/Field-Welded
Mechanical Unloader or
Fluidized Discharge



Fire
Protection



Process
Liquids
Bolted