

Air Valve Bag Packer Series 5500



STANDARD FEATURES INCLUDE:

- Cross-flex scale beam pivots have no wear points, are non-corrosive, and are not affected by dirt
- Scale beam dashpot dampens vibrations
- Dust collection shroud
- Sight glass on pressure chamber allows operator to check product level in pressure chamber
- Automatic start and discharge available
- Optional load cell weighing with MicroLogic® controls

Barry-Wehmiller

The Thiele Series 5500 Air Valve Bag Packer is a combination feeding, filling, and gross weighing machine that is simple to operate and proven dependable, and is designed for packaging granular, pelleted, dry, and fine powder type products.

The machine incorporates a butterfly-charging valve, pressure chamber, weighing mechanism, filling spout, and bag discharge saddle.

To operate the Series 5500 Air Valve Packer, product is supplied to the packer from a customer-supplied stabilizing bin equipped with high and low level control switches. The design of this bin is determined by the flow characteristics of the product.

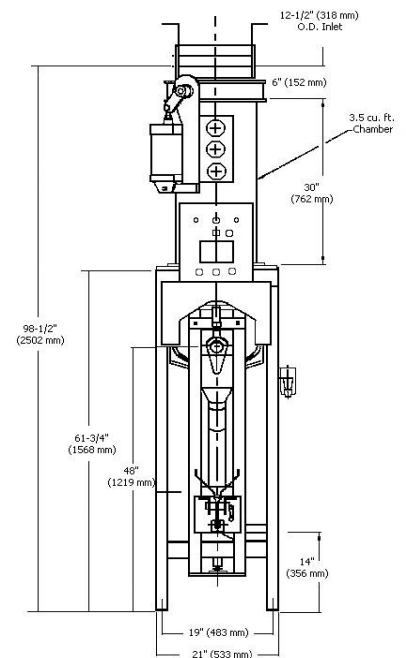
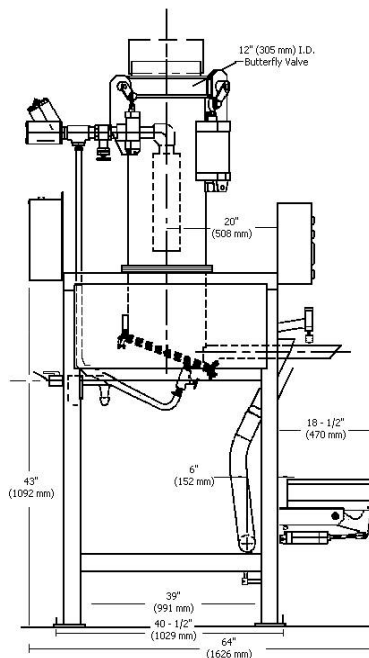
An operator manually places a bag on the filling spout. The start button is activated causing the machine to clamp the bag to the spout and close the butterfly-charging valve. Low pressure air enters at the top of the chamber placing head pressure on the product. If the air pad chamber is used, low pressure air enters through an air pad and fluidizes the entire bottom surface.

The product is blown through a pinch-off tube and spout into the bag. Once the desired weight is reached, the pinch-off tube closes, stopping product flow into the bag and the low pressure air is stopped. After the bag clamp has retracted, the bag is then removed. The butterfly-charging valve will open, product will flow into the charging chamber and the cycle will repeat as another bag is placed on the spout.

Other Thiele products such as valve bag placers, valve bag sealers, and robotic and automatic palletizers are available to complement the Series 5500 Air Valve Bag Packer.



All sales are subject to our prevailing terms and conditions. Illustrations and specifications are subject to change without notice. Machines shown without guards are for illustrative purposes only. Guards are supplied and must be in place before installation.



MACHINE SPECIFICATIONS

CAPACITY

Unit: 20 lb. to 110 lb. (10 kg to 50 kg)
 Bag Length: 16" to 36" (4906 mm to 914 mm)

SPEED

Up to 10 bags per minute, depending on product characteristics and type of valve bag

ACCURACY

Typically plus or minus 1 to 4 ounces (28 to 112 grams) at sigma 2. Actual accuracies depend on product flow characteristics, speed, type of weigh system used, and valve bag construction.

SPOUT SIZES

Spout sizes are available for valves 3" to 6" (76 mm to 152 mm)

POWER REQUIREMENTS

Input Power: 115 volt, 1 phase, 60 cycle
 Control Circuit: 115 volts, 60 cycle, A.C.
 Current Draw: 1.2 Amperes (does not include blower)
 Blower: 230/460 volts, 3 phase, 60 cycle

AIR REQUIREMENTS

Operating Pressure: 80 psi (5.4 Atm)
 Line Pressure: 90 psi (6.1 Atm) minimum
 Free Air/Cycle: 0.75 cu. ft. (21.2 liters)
 Add 0.1 cu. ft. (2.8 liters) with automatic bag discharge

Thiele Technologies, Inc.

A BARRY-WEHMILLER COMPANY
 www.thieletech.com
 sales@thieletech.com
 5500f081601

315 27th Avenue Northeast
 Minneapolis, MN 55418 USA
 612/782-1200
 Fax 612/782-1209