

Automatic, High Speed Bagging System UltraStar™



Features:

- Dual-bag handling for higher speed and greater productivity
- Automatic discharge of unsatisfactory bags
- Handles most paper, polyethylene, and woven polypropylene bags
- Unified drive for smooth mechanical operation
- 3-5 minute no-tool changeover
- Precharged product filling for faster fill rates and reduced product dusting
- Optional PC-control for easy troubleshooting and less downtime
- Integral poly bag sealer



Barry-Wehmiller

Automatic, High Speed Bagging System UltraStar™

The UltraStar automatic, dual-bag handling system offers the best value in integrated bagging machinery today.

The UltraStar is a high-speed bagging system for packaging 20-110 lbs. (10-50 kg) of product in multi-wall paper and poly bags at speeds up to 30 bags per minute. Automatic discharge of unsatisfactory bags, whether unopened or improperly sized, and 3-5 minute no-tool change-over are among the many advanced technologies featured.

A unified mechanical drive creates smooth and efficient machine operation, while in-line bag handling with total bag top control allows optimum speed with precision bag closing and sealing. Precharged product filling provides faster fill rates and less dust.

The UltraStar offers the packer of large bags, the production enhancing features formerly found only on packaging systems for small bags. The UltraStar system is ideal for

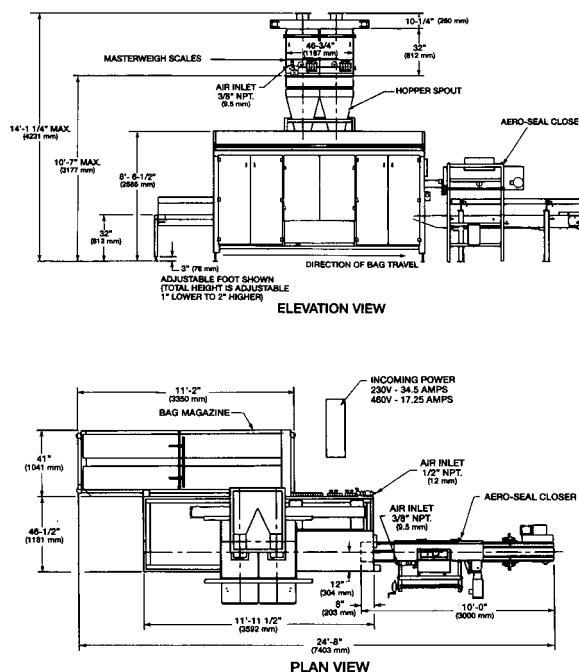
industries where speed and line efficiencies are critical. These industries include pet food, sugar, salt, seed, fertilizer, rice, and petro-chemical resin.

The UltraStar eliminates spillage, reduces downtime, provides easier troubleshooting, and minimizes dusting for greater productivity.

Thoroughly field-tested, the UltraStar is a durable and cost-effective investment providing a competitive advantage to your bagging operation.

Machine Specifications

- **PRODUCTION SPEED:** Up to 30 bags per minute
- **BAG SIZES:**
 - Paper Bags
 - Face Width: 11" to 19" (279 mm to 483 mm)
 - Bag Length: 21" to 41" (533 mm to 1041 mm)
 - PBOM: 20" to 40" (508 mm to 1016 mm)
 - SOM: 20" to 40" (508 mm to 1016 mm)
 - Plastic Bags
 - Face Width: 11" to 19" (279 mm to 483 mm)
 - Bag Length: 20" to 40" (508 mm to 1016 mm)
- **ELECTRICAL REQUIREMENTS:**
 - Input Power: 230/460 volt, 3 phase, 60 hz
 - Control Circuit: 115 volt, 1 phase, 60 hz (from control transformer)
 - Max. Current Draw: 230 volt . . . 20 amps
460 volt . . . 10 amps
- **AIR REQUIREMENTS:**
 - Operating Pressure: 80 psi (5.4 atm)
 - Line Pressure: 90 psi (6.1 atm)
 - Air Use Per Cycle: 2 scf (57 liters) free air per cycle
- **SHIPPING WEIGHT (APPROXIMATE):**
 - Bagger: 4,500 lbs. (2025 kg)
 - Bag Magazine: 500 lbs. (225 kg)
 - Closing Conveyor: 300 lbs. (136 kg)



Specifications are subject to change without notice. All sales are subject to our prevailing terms and conditions. Product, bags, and application requirements must be submitted for appraisal. Specific application approval drawings will be provided.

Thiele Technologies, Inc.

A BARRY-WEHMILLER COMPANY

www.thieletech.com

sales@thieletech.com

BP 00000 3/99 2.5M

315 27th Avenue N.E.

Minneapolis, MN 55418-2715

612/782-1200 fax 612/782-1209