

# Masterweigh™ Net Weigh Scale



*Series 6161 Simplex  
Gravity Bulk-Gravity Dribble*



*Series 6162 Duplex  
Gravity Bulk-Vibrator Dribble*

The Series 60 Masterweigh™ Net Weigh Scale by Thiele Technologies provides extremely accurate, high speed weighing of a wide range of products, from granular free-flowing to semi free-flowing. The computer-controlled system makes operation simple and product changeovers fast and easy. Single or double stage weighing systems are available, as well as automatic zero tare and automatic weigh compensation.

Masterweigh Net Weigh Scales are designed for fast, easy and trouble-free clean-out. All product contact surfaces are made of stainless steel and all contact surfaces are angled to improve the product flow and simplify clean-up. The electronic weigh system is isolated in a sealed, dust-free environment.

## STANDARD FEATURES INCLUDE:

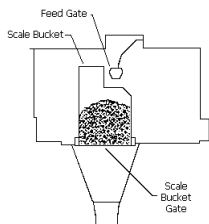
- Direct mount platform load cell for faster, more accurate weighments
- A choice of feed sections for extremely accurate two-stage weighing
- Computer systems control and monitor the weighing operation as well as store data
- One, two or four weigh buckets can be used to meet the production speed required
- Automatic calibration option available for applications where push-button calibration is desired
- Full panel side doors for easy access, clean-out, and maintenance

# Barry-Wehmiller

Thiele offers a full line of feed systems to ensure precise weighments are achieved with every application. The feed section of the Masterweigh™ Net Weigh Scale is located just below the supply hopper and just above the weigh bucket. It controls product flow to the weigh system through a two-stage process. The first stage (bulk filling) provides a fast fill to near target weight. The second stage (dribble filling) provides a slow fill to the precise weight.

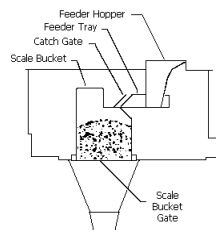
### Gravity Bulk-Gravity Dribble

is suitable for free-flowing dry products such as seed, granulars, prills, or small pellets. The bulk and dribble flow through the same opening, controlled separately by air cylinders on a common cut-off gate.



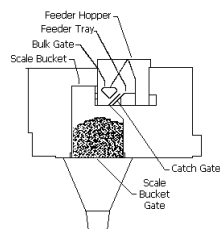
### Vibrator Bulk-Vibrator Dribble

is suitable for a wide range of semi free-flowing, free-flowing products, and more solid materials that do not flow freely. Typical products include bone meal, briquettes, candy, corn meal, detergents, pesticides, vegetables, and macaroni. A vibrator operates at full speed when bulk filling, and at reduced speed during the dribble portion. Vibrator dribble provides very high accuracy.



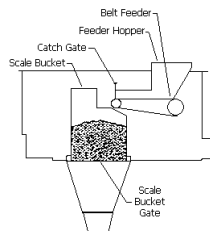
### Gravity Bulk-Vibrator Dribble

is recommended for free-flowing products such as corn, beans, peas, grains, plastic pellets, rice, seeds, soybeans, granular sugar, bird seed, and granular chemicals. A pneumatically operated gate provides a fast bulk fill, with the final five to ten percent fed with a controlled vibrator dribble. Higher speed than the vibrator-bulk model.



### Two-Speed Belt Feed

is designed for products that tend to bridge, like potting soil, animal feed, wood chips, and peat moss. During the bulk cycle a belt carries product to the weigh bucket at high speed. During the dribble cycle the belt runs at a slower speed. The two-speed feed section can also operate as a single stage, bulk feed system.



The weigh bucket is located just below the feed section. It accumulates the product during the fill cycle. When the precise weight has been reached, the computer sends an electronic “dump” signal and the weigh bucket discharges the product.

The weigh system features an electronic platform type strain gauge load cell which supports the weigh bucket. As the bucket fills, the load cell transmits a signal proportional to the weight. When the target weight has been reached the feeding stops. The weigh system is sealed in a dust-free environment below and behind the weigh bucket.

All sales are subject to our prevailing terms and conditions. Illustrations and specifications are subject to change without notice. Machines shown without guards are for illustrative purposes only. Guards are supplied and must be in place before installation.

## MACHINE SPECIFICATIONS

### Capacity

Unit Weight: 10 to 100 lbs.. (9 to 45.5 kg)

Bucket Volume: 2½ cu. ft. (70.0 liters)

### Accuracy

Two-stage bulk and dribble mode is typically ± ¾ oz. to 3 oz. (20 to 85 grams) at 2 sigma, dependent on product

### Speed

Up to 25 bags per minute. Production speed depends on the number of weigh buckets and product flow characteristics. Products should be evaluated by the Thiele Testing & Applications Department

### Power Requirements

Control Circuit 115 volts, 1 phase, 60 Hz

Maximum Draw 3 to 5 Amps, dependent on feed section used. Amperage is doubled for duplex scale

### Air Requirements

Operating Pressure 80 psi (5.4 ATM)

Line Pressure 90 psi (6.1 ATM)

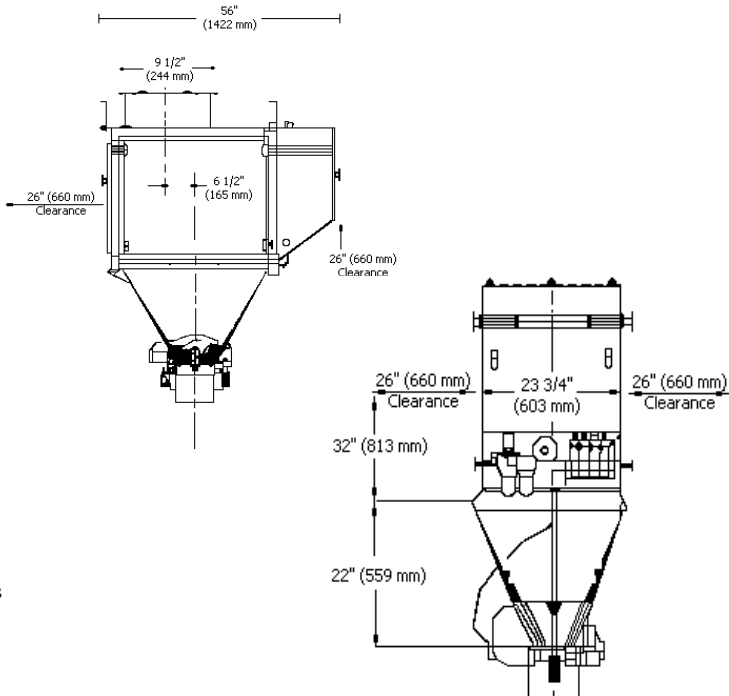
Air Use Per Cycle 0.25 cu. ft. (7.0 liters) per bucket

### Weight

Approximately 1,000 lbs. (450 kg)

The Masterweigh Net Weigh Scale can be controlled with our CompuTrac II Controller, or optional Data Center XLT.

Other Thiele machines available to complement the Masterweigh Net Weigh Scale include Automatic Open-Mouth Filling Systems, Aero-Seal® Closers, and Master® Automatic and Robotic Palletizers.



## Thiele Technologies, Inc.

A BARRY-WEHMILLER COMPANY  
 www.thieletech.com  
 sales@thieletech.com  
 MWf081501

315 27th Avenue Northeast  
 Minneapolis, MN 55418 USA  
 612/782-1200  
 Fax 612/782-1209