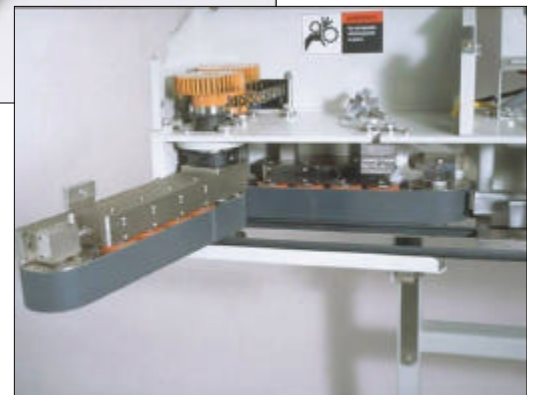


**Aero-Seal® Bag Closer
Series 4600**



STANDARD FEATURES INCLUDE:

- Electronic heater controls with LED readout for easy adjustment
- Crank style elevating mechanism that promotes fast height adjustment
- Sealed ball bearings that require no lubrication
- Removable heater nozzle and folder blade for simple, tool-less clean-out
- Variable speed D.C. drive
- Optional bag top printer available

Barry-Wehmiller

The Thiele Series 4600 Aero-Seal® Bag Closer is designed to close stepped-end multiwall bags after the bag has been filled with product. Once filled, the bag closer activates the pre-applied hot melt adhesive on the bags and folds over the top to seal the closure.

As the filled bag moves along a conveyor, the bag top is manually or automatically formed and fed into the entrance guide of the closer. V-belts then convey the bag top through the bag closer.

The bag enters between the creasing rollers to set the fold line and to fold the bag top 90 degrees. The bag enters above the hot air nozzle where hot air, under regulated pressure and temperature, is forced against the pre-applied adhesive to activate it.

Finally, the bag top passes through a series of compression rollers to compress the fold and set the adhesive.



Simple, tool-less clean-out

MACHINE SPECIFICATIONS

SPEED

Variable speed D.C. 25 ft. to 100 ft. (7.6 m to 35.7 m) per minute, depending on model. Actual maximum sealing speed may be less than that stated due to bag style, bag adhesive type, flap size, ambient temperature, and sealer heater temperature.

BAG CONSTRUCTION

Pre-applied adhesive should consist of three or four lines, starting approximately 1/8" (3 mm) from the edge of bag top. Adhesive lines to be approximately 3/16" (4.8 mm) wide with center-to-center distance approximately 3/8" (9 mm), depending on dimension of the step.

POWER REQUIREMENTS

Input Power: 230 volts, 1 phase, 60 Hz*

Maximum Current Draw: 230 volts (40 amps)

Motor: 3/4 H.P.

* A 5 KVA transformer is required for control and heater circuit if input power is 460 volts

AIR REQUIREMENTS

Operating Pressure: 5 to 8 psi (.34 to .54 Atm)

Line Pressure: 60 psi (4.1 Atm) minimum

Maximum Free

Air Consumption: 8 cu. ft. (225 liters) free air per minute at 5 to 8 psi (.34 to .54 Atm)

DIMENSIONS

Length: 67" (1701 mm) includes 10 1/2" (266 mm) entry guide*

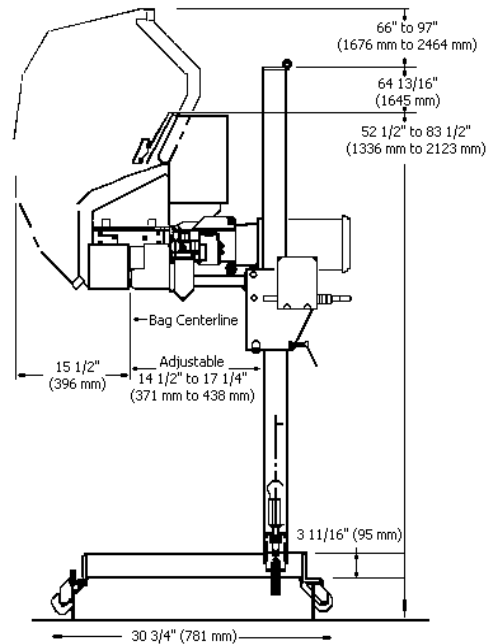
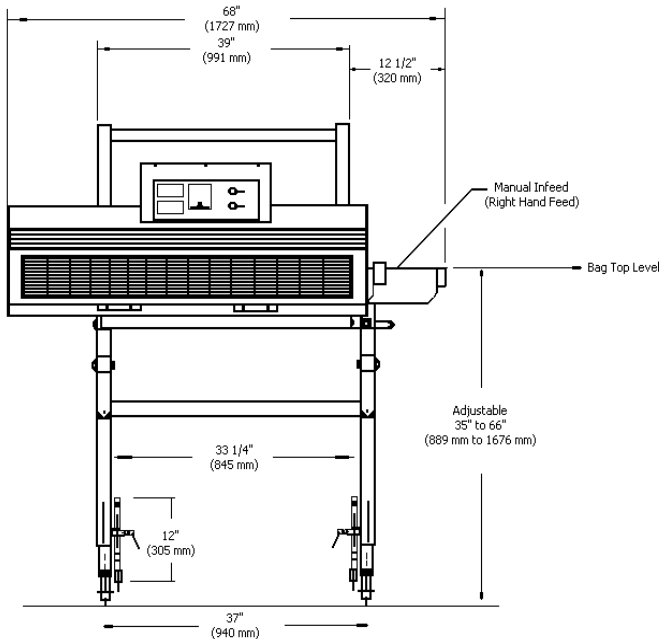
Depth: 32" (812 mm)

Height: Overall 79" (2006 mm) maximum floor to bag top**

Adjustable: 34 1/2" to 65 1/2" (876 mm to 1663 mm)

* Add 9" (229 mm) for optional bag top printer

** Add 5" (127 mm) if on casters



All sales are subject to our prevailing terms and conditions. Illustrations and specifications are subject to change without notice. Machines shown without guards are for illustrative purposes only. Guards are supplied and must be in place before installation.

Thiele Technologies, Inc.

A BARRY-WEHMILLER COMPANY
 www.thieletech.com
 sales@thieletech.com
 4600f081501

315 27th Avenue Northeast
 Minneapolis, MN 55418 USA
 612/782-1200
 Fax 612/782-1209